



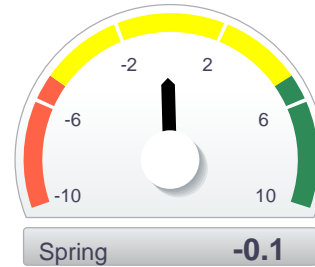
Snapshot Enrollment Comparison Report

27 Days Till Start of Spring 2017

Current University Enrollment

Spring 2017

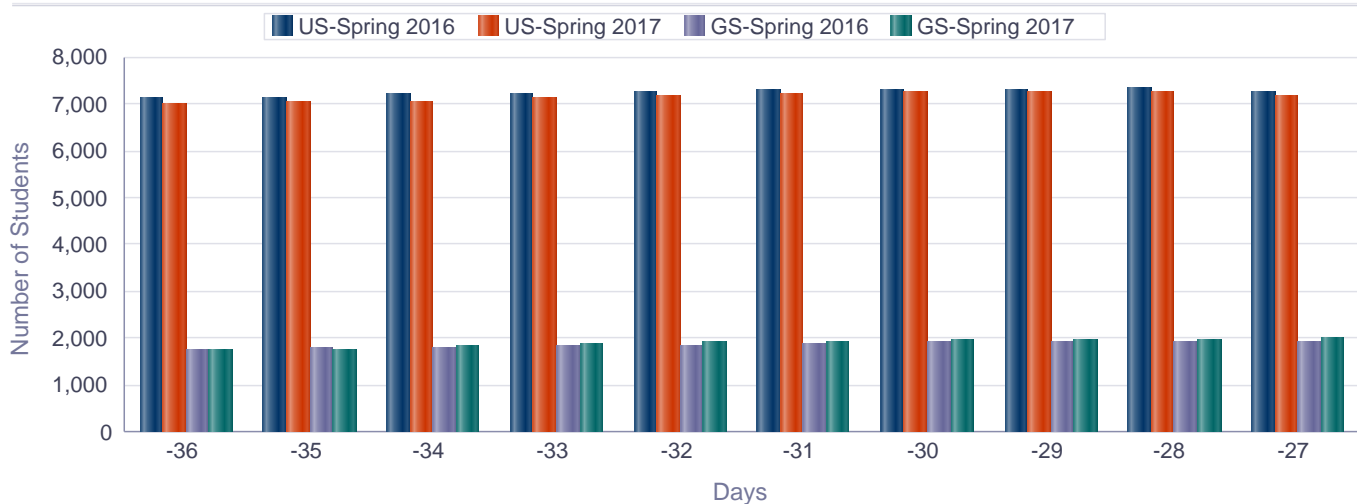
Term	Last Year	Current Year	Number Difference	Percent Difference
Spring	9,173	9,160	-13	-0.1%



Current Enrollment by Student Level

Student Level	Last Year	Current Year	Number Difference	Percent Difference
Undergraduate	7,233	7,161	-72	-1.0%
Graduate	1,941	1,999	58	3.0%

10 Day Enrollment Trend by Student Level



Note: Red cells indicate a percent change of less than -5.00%, yellow cells indicate percent change between -5.00% and 5.00%, green cells indicate percent change of greater than 5.00%, and medium grey indicate no percent change available.



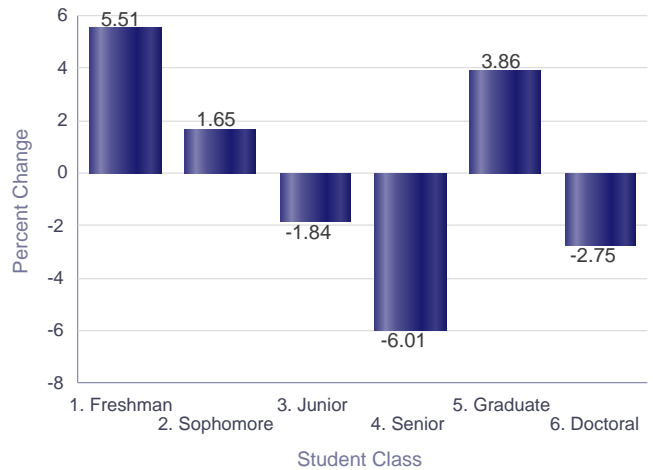
Snapshot Enrollment Comparison Report

27 Days Till Start of Spring 2017

Current Enrollment by Student Class

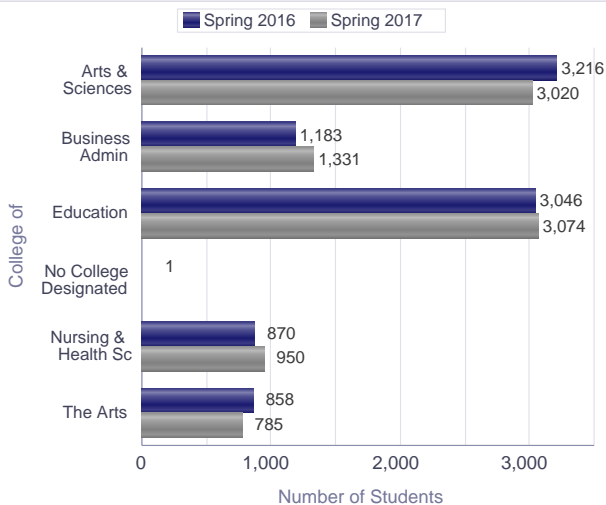
Student Class	Last Year	Current Year	Number Difference	Percent Difference
1. Freshman	1,470	1,551	81	5.5%
2. Sophomore	1,574	1,600	26	1.7%
3. Junior	1,743	1,711	-32	-1.8%
4. Senior	2,446	2,299	-147	-6.0%
5. Graduate	1,686	1,751	65	3.9%
6. Doctoral	255	248	-7	-2.7%

Percent Change by Student Class



Current Enrollment by Primary College

Enrollment by Primary College



College of	Last Year	Current Year	Number Difference	Percent Difference
Arts & Sciences	3,216	3,020	-196	-6.1%
Business Admin	1,183	1,331	148	12.5%
Education	3,046	3,074	28	0.9%
Nursing & Health Sc	870	950	80	9.2%
The Arts	858	785	-73	-8.5%

Note: Red cells indicate a percent change of less than -5.00%, yellow cells indicate percent change between -5.00% and 5.00%, green cells indicate percent change of greater than 5.00%, and medium grey indicate no percent change available.



Snapshot Enrollment Comparison Report

27 Days Till Start of Spring 2017

Current Enrollment by College, Student Level, and Primary Major

College of	Level	Major Code	Major	Last Year	Current Year	Number Difference	Percent Difference
Arts & Sciences	US	MAA	Applied Mathematics	14	18	4	28.6%
Arts & Sciences	US	AAA	Associate of Arts	15	6	-9	-60.0%
Arts & Sciences	US	AST	Astronomy	17	15	-2	-11.8%
Arts & Sciences	US	BIO	Biology	546	524	-22	-4.0%
Arts & Sciences	GS	BIO	Biology	11	13	2	18.2%
Arts & Sciences	US	CHM	Chemistry	129	108	-21	-16.3%
Arts & Sciences	US	CIS	Computer Information Systems	87	97	10	11.5%
Arts & Sciences	US	CS	Computer Science	139	147	8	5.8%
Arts & Sciences	US	CRM	Criminal Justice	272	235	-37	-13.6%
Arts & Sciences	GS	CRM	Criminal Justice	11	8	-3	-27.3%
Arts & Sciences	US	CRMO	Criminal Justice - Online	79	77	-2	-2.5%
Arts & Sciences	US	EGS	Engineering Studies (2 yr)	167	145	-22	-13.2%
Arts & Sciences	US	ENG	English	113	103	-10	-8.8%
Arts & Sciences	GS	ENG	English	21	9	-12	-57.1%
Arts & Sciences	GS	ESLA	English Studies Lang Art Tchrs	6	11	5	83.3%
Arts & Sciences	US	EVS	Environmental Geosciences	39	43	4	10.3%
Arts & Sciences	US	FR	French	9	9	0	0.0%
Arts & Sciences	US	HIS	History	87	84	-3	-3.4%
Arts & Sciences	GS	HIS	History	4	1	-3	-75.0%
Arts & Sciences	US	INDS	Interdisciplinary Studies	109	96	-13	-11.9%
Arts & Sciences	US	SSS	Learning Support	45	29	-16	-35.6%
Arts & Sciences	US	LA	Legal Assistant Studies	26	19	-7	-26.9%
Arts & Sciences	US	LAO	Legal Assistant Studies-Online	1	5	4	400.0%
Arts & Sciences	US	MAT	Mathematics	43	46	3	7.0%
Arts & Sciences	US	MCO	Mathematics-Computr Sci Option	1	0	-1	-100.0%
Arts & Sciences	US	ORGL	Organizational Leadership	203	216	13	6.4%

Note: Red cells indicate a percent change of less than -5.00%, yellow cells indicate percent change between -5.00% and 5.00%, green cells indicate percent change of greater than 5.00%, and medium grey indicate no percent change available.



Snapshot Enrollment Comparison Report

27 Days Till Start of Spring 2017

College of	Level	Major Code	Major	Last Year	Current Year	Number Difference	Percent Difference
Arts & Sciences	US	PHRS	Philosophy & Religious Studies	21	14	-7	-33.3%
Arts & Sciences	US	PHY	Physics	15	13	-2	-13.3%
Arts & Sciences	US	POS	Political Science	118	109	-9	-7.6%
Arts & Sciences	US	EGR	Pre-Engineering	0	1	1	
Arts & Sciences	GS	PA	Public Administration	146	149	3	2.1%
Arts & Sciences	GS	SOCG	Sociology	10	9	-1	-10.0%
Arts & Sciences	US	SOC	Sociology & Anthropology	166	134	-32	-19.3%
Arts & Sciences	US	SPA	Spanish	41	33	-8	-19.5%
Arts & Sciences	US	CCT	Transient	11	28	17	154.5%
Arts & Sciences	US	LAS	Undecided	494	466	-28	-5.7%
Business Admin	US	ACC	Accounting	80	207	127	158.8%
Business Admin	GS	ACC	Accounting	27	22	-5	-18.5%
Business Admin	US	BAAC	BBA-Accounting	113	0	-113	-100.0%
Business Admin	US	BAEC	BBA-Economics	25	0	-25	-100.0%
Business Admin	US	BAFI	BBA-Finance	48	1	-47	-97.9%
Business Admin	US	BAHC	BBA-Healthcare Administration	81	0	-81	-100.0%
Business Admin	US	BAIB	BBA-International Business	54	0	-54	-100.0%
Business Admin	US	BAMG	BBA-Management	122	1	-121	-99.2%
Business Admin	US	BAMK	BBA-Marketing	132	1	-131	-99.2%
Business Admin	US	BA	Business Administration	221	174	-47	-21.3%
Business Admin	US	ECO	Economics	7	34	27	385.7%
Business Admin	US	FIN	Finance	33	95	62	187.9%
Business Admin	US	HCAD	Healthcare Administration	30	124	94	313.3%
Business Admin	US	IB	International Business	28	74	46	164.3%
Business Admin	US	MGT	Management	68	253	185	272.1%
Business Admin	US	MGTO	Management - Online	0	84	84	
Business Admin	US	MKT	Marketing	53	202	149	281.1%
Business Admin	GS	MBA	Master Business Administration	61	59	-2	-3.3%
Education	GS	ACE	Adult & Career Education	50	52	2	4.0%

Note: Red cells indicate a percent change of less than -5.00%, yellow cells indicate percent change between -5.00% and 5.00%, green cells indicate percent change of greater than 5.00%, and medium grey indicate no percent change available.



Snapshot Enrollment Comparison Report

27 Days Till Start of Spring 2017

College of	Level	Major Code	Major	Last Year	Current Year	Number Difference	Percent Difference
Education	GS	AC	Adult and Career Education	14	14	0	0.0%
Education	US	ASLX	Amer Sign Lang/Engl Interp-Coe	33	42	9	27.3%
Education	US	ASL	Amer Sign Lang/English Interp	42	46	4	9.5%
Education	GS	BE	Business Education-Grades 6-12	1	0	-1	-100.0%
Education	GS	SLPD	Clinical Doctorate in SLP	8	8	0	0.0%
Education	GS	COCP	Coaching Pedagogy in Phys Educ	10	14	4	40.0%
Education	GS	COMD	Communication Disorders	112	114	2	1.8%
Education	US	COMX	Communication Disorders	98	89	-9	-9.2%
Education	US	COMD	Communication Disorders	109	105	-4	-3.7%
Education	GS	CIAT	Curr&Inst Accomplished Teachin	119	126	7	5.9%
Education	GS	C&I	Curriculum and Instruction	52	59	7	13.5%
Education	US	ECEX	Early Childhd Educ-Coe	137	181	44	32.1%
Education	GS	ECE	Early Childhood Education	85	109	24	28.2%
Education	US	ECE	Early Childhood Education	77	84	7	9.1%
Education	GS	EL	Educational Leadership	1	1	0	0.0%
Education	GS	EDL	Educational Leadership	255	272	17	6.7%
Education	GS	ENG	English	2	0	-2	-100.0%
Education	GS	GIFT	Gifted Endorsement	1	4	3	300.0%
Education	GS	PE	Health/Physical Edu-Gr PreK-12	10	5	-5	-50.0%
Education	US	PE	Health/Physical Edu-Gr PreK-12	23	18	-5	-21.7%
Education	US	HCP	Human Capital Performance	7	4	-3	-42.9%
Education	US	HCPO	Human Capital Performnc-Online	17	17	0	0.0%
Education	GS	IT	Instructional Technology	116	122	6	5.2%
Education	GS	LDR	Leadership	103	95	-8	-7.8%
Education	GS	LIS	Library & Information Science	187	203	16	8.6%
Education	GS	MFT	Marriage/Family Therapy	59	65	6	10.2%
Education	GS	MGMS	Middle Grades Educ Math/Scienc	30	27	-3	-10.0%
Education	US	MGEX	Middle Grades Educ-Coe	105	96	-9	-8.6%
Education	US	MGE	Middle Grades Educ-Grades 4-8	70	50	-20	-28.6%

Note: Red cells indicate a percent change of less than -5.00%, yellow cells indicate percent change between -5.00% and 5.00%, green cells indicate percent change of greater than 5.00%, and medium grey indicate no percent change available.



Snapshot Enrollment Comparison Report

27 Days Till Start of Spring 2017

College of	Level	Major Code	Major	Last Year	Current Year	Number Difference	Percent Difference
Education	GS	MID	Middle Grades Education	6	2	-4	-66.7%
Education	US	OATO	Office Admin & Tech-online	12	12	0	0.0%
Education	US	OATX	Office Admin & Tech-online Coe	56	64	8	14.3%
Education	US	OAT	Office Adminstrtion & Technolo	64	45	-19	-29.7%
Education	GS	OLT	On-line Teaching Certificate	3	0	-3	-100.0%
Education	US	PEX	Physical Education-Coe	25	32	7	28.0%
Education	US	PSY	Psychology	278	257	-21	-7.6%
Education	GS	PSY	Psychology	48	43	-5	-10.4%
Education	US	PSYX	Psychology-Coe	176	178	2	1.1%
Education	GS	SCO	School Counseling	37	55	18	48.6%
Education	GS	SED	Secondary Education	4	4	0	0.0%
Education	GS	SCD	Secondary Education	22	18	-4	-18.2%
Education	GS	SWK	Social Work	103	104	1	1.0%
Education	US	SPD	Special Education	10	8	-2	-20.0%
Education	US	SPE	Special Education	48	53	5	10.4%
Education	GS	SPE	Special Education	43	51	8	18.6%
Education	GS	SPD	Special Education	9	14	5	55.6%
Education	US	SPDX	Special Education-Coe	11	7	-4	-36.4%
Education	US	SPEX	Special Education-Coe	38	9	-29	-76.3%
Education	GS	TL	Teacher Leadership	90	72	-18	-20.0%
Education	US	WED	Workforce Educ & Development	30	24	-6	-20.0%
No College Designated	GS	LIS	Library & Information Science	1	0	-1	-100.0%
Nursing & Health Sc	US	ANUR	Accel Pre-Nursing	0	30	30	
Nursing & Health Sc	US	AT	Athletic Training	30	17	-13	-43.3%
Nursing & Health Sc	US	EP	Exercise Physiology	64	58	-6	-9.4%
Nursing & Health Sc	US	NUR	Nursing	154	176	22	14.3%
Nursing & Health Sc	GS	MNUR	Nursing	38	38	0	0.0%
Nursing & Health Sc	US	PAT	Pre-Athletic Training	50	61	11	22.0%

Note: Red cells indicate a percent change of less than -5.00%, yellow cells indicate percent change between -5.00% and 5.00%, green cells indicate percent change of greater than 5.00%, and medium grey indicate no percent change available.



Snapshot Enrollment Comparison Report

27 Days Till Start of Spring 2017

College of	Level	Major Code	Major	Last Year	Current Year	Number Difference	Percent Difference
Nursing & Health Sc	US	PEP	Pre-Exercise Physiology	115	127	12	10.4%
Nursing & Health Sc	US	PNUR	Pre-Nursing	348	369	21	6.0%
Nursing & Health Sc	US	PNRN	Pre-RN-Nursing	0	4	4	
Nursing & Health Sc	US	NRN	RN-Nursing	1	0	-1	-100.0%
Nursing & Health Sc	US	DHG	WGTC-Dental Hygiene (AAS)	70	70	0	0.0%
The Arts	US	ART	Art	112	101	-11	-9.8%
The Arts	US	ARE	Art Education-Grades PreK-12	16	17	1	6.2%
The Arts	GS	COM	Communication	13	12	-1	-7.7%
The Arts	US	COMM	Communication	186	172	-14	-7.5%
The Arts	US	DANC	Dance	29	24	-5	-17.2%
The Arts	US	ID	Interior Design	43	53	10	23.3%
The Arts	US	MAS	Mass Media	268	237	-31	-11.6%
The Arts	US	MUS	Music	71	80	9	12.7%
The Arts	US	MUE	Music Education-Grades PreK-12	17	1	-16	-94.1%
The Arts	GS	MUE	Music Education-Grades PreK-12	4	3	-1	-25.0%
The Arts	US	MUP	Music Performance	23	12	-11	-47.8%
The Arts	GS	MUP	Music Performance	8	12	4	50.0%
The Arts	US	SPC	Speech Communication	0	2	2	
The Arts	US	THA	Theatre Arts	68	59	-9	-13.2%

Note: Red cells indicate a percent change of less than -5.00%, yellow cells indicate percent change between -5.00% and 5.00%, green cells indicate percent change of greater than 5.00%, and medium grey indicate no percent change available.